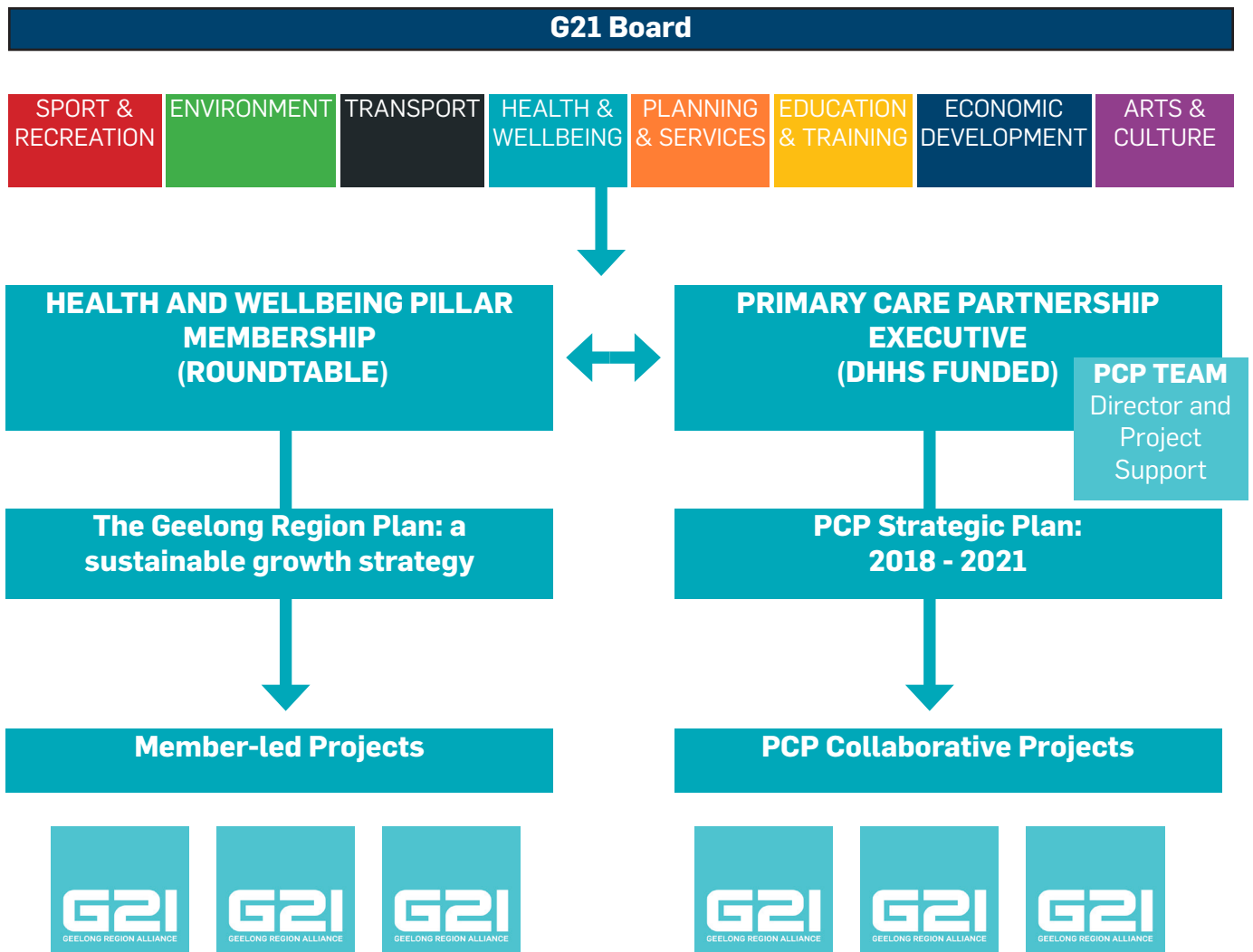


## G21 HEALTH AND WELLBEING PILLAR STRUCTURE



**Health and Wellbeing Pillar Members** are executive or senior management level representatives from G21 Member organisations. The members represent their organisations and communities to build strategic partnerships that facilitate real improvements to health and wellbeing in the G21 region.

**G21 Health and Wellbeing Pillar Chair and Deputy Chair** are elected from the Health and Wellbeing Pillar Members to chair both the Health and Wellbeing Roundtable and the Primary Care Partnership Executive.

**Health and Wellbeing Roundtable** are members of the Health and Wellbeing Pillar that meet bi-monthly to analyse and shape regional health and wellbeing planning and advocacy.

**Primary Care Partnership Executive** are members of the Health and Wellbeing Pillar that meet bimonthly to provide oversight and guidance to the Primary Care Partnership; the Primary Care Partnership is funded by the Department of Health and Human Services to provide a collaborative platform for primary prevention in the G21 region.

**Primary Care Partnership Team** is funded by the Department of Health and Human Services to manage the operations of the Primary Care Partnership. The team consists of a Director and Project Support Workers.

